

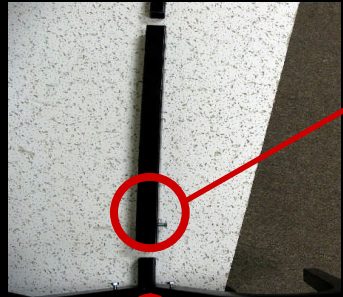
Sled Crane # 9016

Assembly Instructions



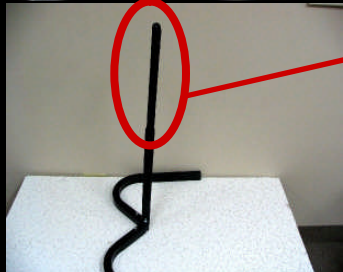
Step 1

- Slide the two hook shaped base pieces onto the inverted v with a short square stem
- Line up the holes and fasten the base with two small 1" screws



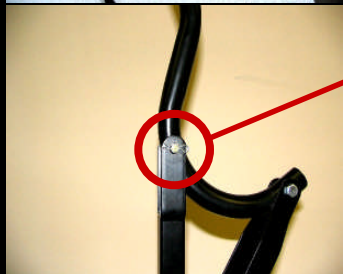
Step 2

- Place the square tube onto the stem with the screw facing to the side
- Tighten screw against metal stem



Step 3

- Insert the square tube with the yoke into the first square tube
- Determine desired height and screw into place



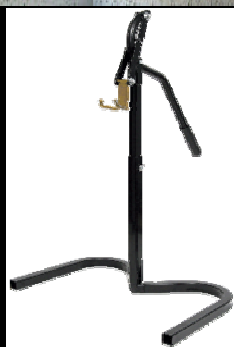
Step 4

- Place the hook shapes handle into the yoke and fasten with the hinge pin and cotter pin.
- Make sure that the hook is facing the same way as the base!!!!



Step 5

- Attach double sided plate onto the end of the handle (large hook) and fasten with a bolt and nut
- Attach gold lift hook to the opposite end of the double sided plate with a bolt and nut



Step 6

- Completed lift should look like this with a sled in place
 - The handle will be flush against the back of the stem and the gold lift hook is flush against the front of the stem
- **Excessive push or pull on the handle may cause the rubber grip to slide off****

If you have questions in regards to this instruction sheet –
Please contact our Tech Line at (905) 683-3785

PARTS LIST

Part # 9016

| # Pieces | Description |
|-----------------|----------------------|
| 1 | Middle Base Piece |
| 2 | Curved Base Pieces |
| 1 | Stem Piece # 2 |
| 1 | Lift Handle |
| 1 | Stem Piece # 1 |
| 2 | Hook Mounting Plates |
| 1 | Hook |
| 2 | Lock Nuts |

